

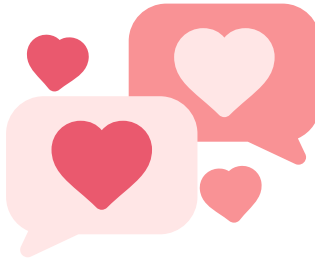


“Ask the Expert” Webinar

Let’s Talk About Love:

Romantic Relationships, Intimacy, and Aphasia

Thursday, July 10th at 7pm Eastern Time



With **Amanda Stead**, PhD, CCC-SLP, CHSE and **Allie Reed**, MS, CCC-SLP

Romantic relationships and intimate connection are vital aspects of well-being and identity. But, they can be difficult to talk about, especially after an aphasia diagnosis. This month’s webinar brings together professionals and people with aphasia to explore:

- How aphasia affects communication, connection, and intimacy
- How partners can stay connected
- What supports are available



[Submit a question
for our Expert](#)



[Join us on this
Zoom Link](#)



[View recordings of
previous webinars](#)